



Valentine House, Fulham  
SW6

[GARTON JONES.COM](https://www.gartonjones.com)



# Valentine House, Fulham , SW6

GARTON JONES.COM

11 Park Street  
Chelsea Creek  
London  
SW6 2FS

Sales +44 (0) 20 7824 7090  
paul@gartonjones.com  
www.gartonjones.com

## £1,100 Per Week

### Stylish Furnished Two-Bedroom Apartment with Garden Views

Available from 1st September, this elegantly furnished two-bedroom apartment offers well-proportioned living space with desirable views over the stunning communal gardens.

The accommodation features a luxury open-plan lounge and kitchen, two double bedrooms with an ensuite to the master, plus a further family bathroom. The apartment benefits from a high-class finish throughout and access to a private balcony.

#### Residents' Facilities at Kings Road Park

- 24-hour concierge
- Swimming pool and gymnasium
- Two cinema rooms
- Private kitchen and games room
- Stylish residents' lounge

#### Prime Location

- Less than a mile from the famous King's Road
- 8-minute walk to Fulham Broadway Station (District line) with excellent Central London links

Available 1st September 2025

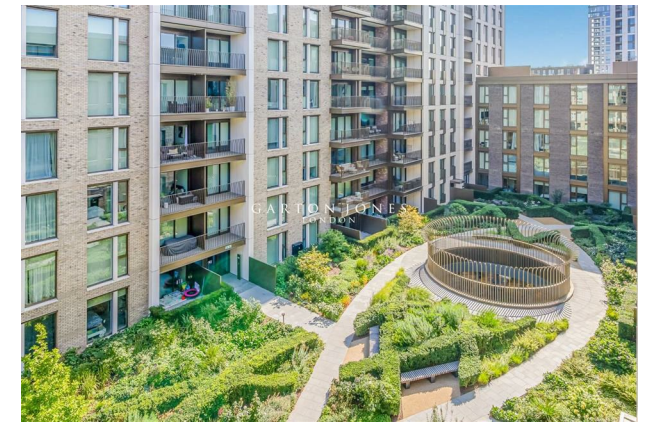
6 Weeks Security Deposit

12 Month Tenancy

Council Tax — Hammersmith & Fulham — Band G

EPC B

- Highly Desirable Kings Road Park Development
- Stunning Two Bedroom Apartment
- 813sqft (75sqm)
- Directly overlooking well maintained communal gardens
- En Suite To Master Bedroom
- Stylishly Furnished
- 5th Floor with Balcony
- Residents Games Room & Golf Simulator
- Fitness Centre, Indoor Pool, Sauna & Steam room, Gymnasium
- 24 Hour Concierge

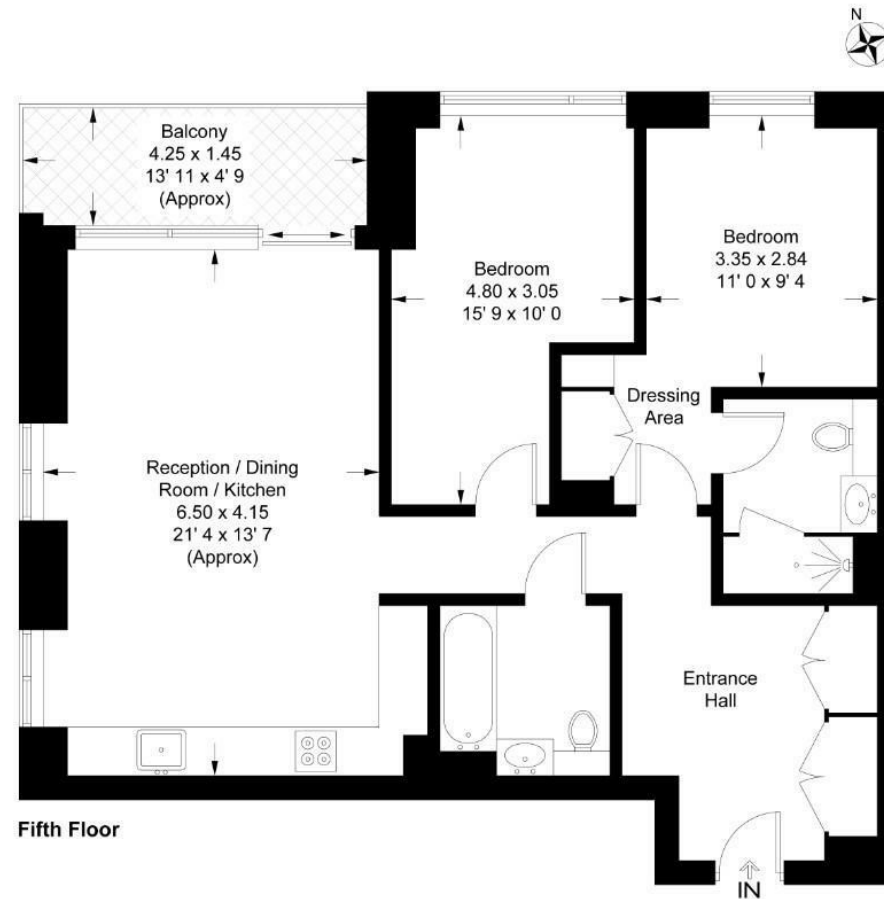


EPC certificate available on request.

## Valentine House

Approximate Gross Internal Area = 813 sq ft / 75.5 sq m  
Balcony = 66 sq ft / 6.1 sq m

GARTON JONES  
LONDON



Fifth Floor

This plan is not to scale and must be used as layout guidance only. All measurements and areas are approximate and should not be relied upon to provide accurate information. This plan must not be relied upon when making property valuations, design considerations or any other such relevant decisions. We accept no responsibility or liability (whether in contract, tort or otherwise) in relation to any loss whatsoever arising from or in connection with any use of this plan or the adequacy, accuracy or completeness of it or any information within it.





